

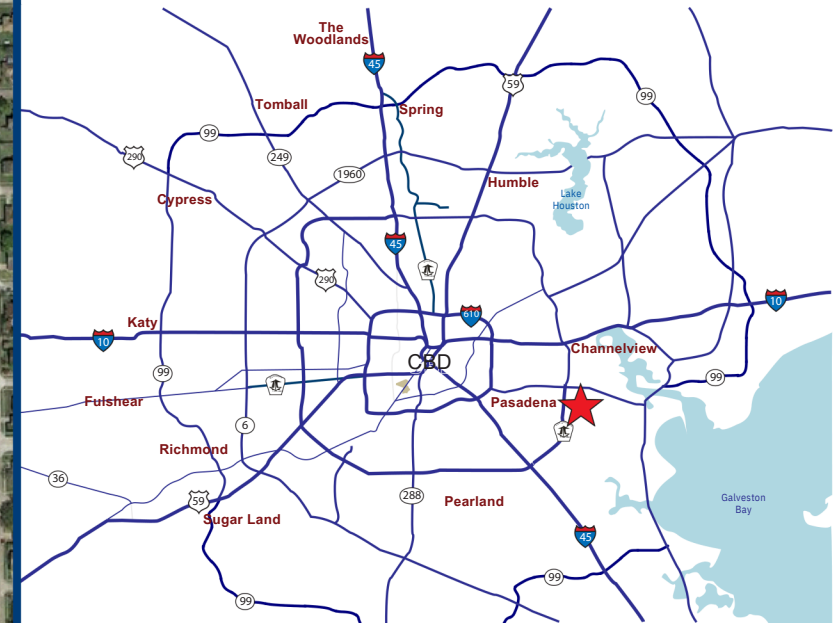
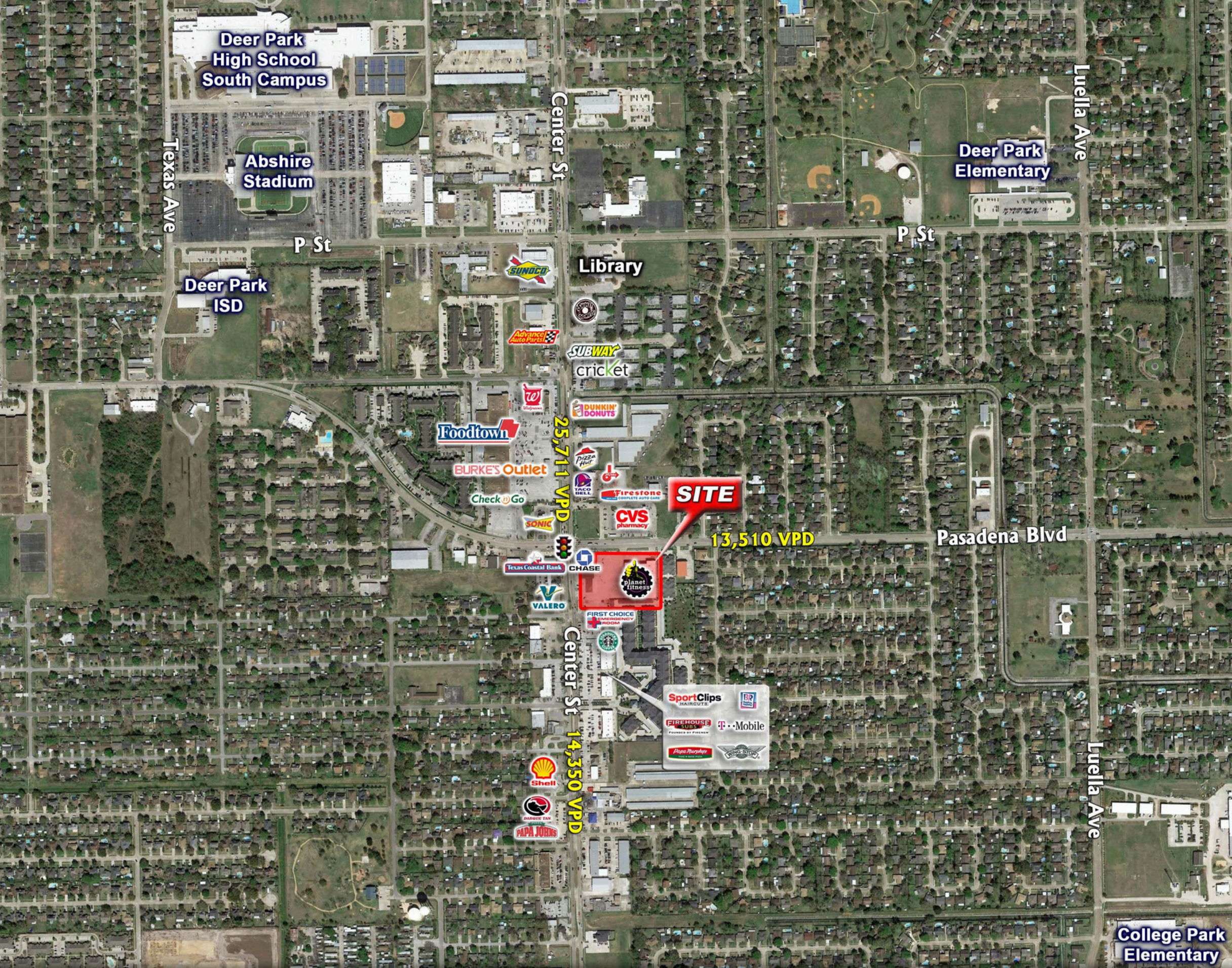


Deer Park Marketplace - 100% Leased!

SEC Center St & Pasadena Blvd - Deer Park, Texas



Danny Kuperman
danny@arg-properties.com
p: 713-439-0101



Property Description

- Located at a major intersection in Deer Park, Texas a suburb of Southeast Houston, just down the street from Deer Park High School, home to almost 4,000 students for grades 9-12.
- Current Tenants:
Planet Fitness, Kids Empire, Tacos La Bala & Tex Smiles

Available: 100% Leased
 Pricing: Call for Rates/Pricing

Traffic Counts

Center Street: 25,711 VPD (Kalibrate 2022)
 Pasadena Blvd: 13,510 VPD (Kalibrate 2022)

Demographics

	1-mile	3-miles	5-miles
2022 Population	17,552	83,897	176,608
Daytime Population	15,241	88,346	185,302
Avg HH Income	\$110,025	\$98,548	\$93,322

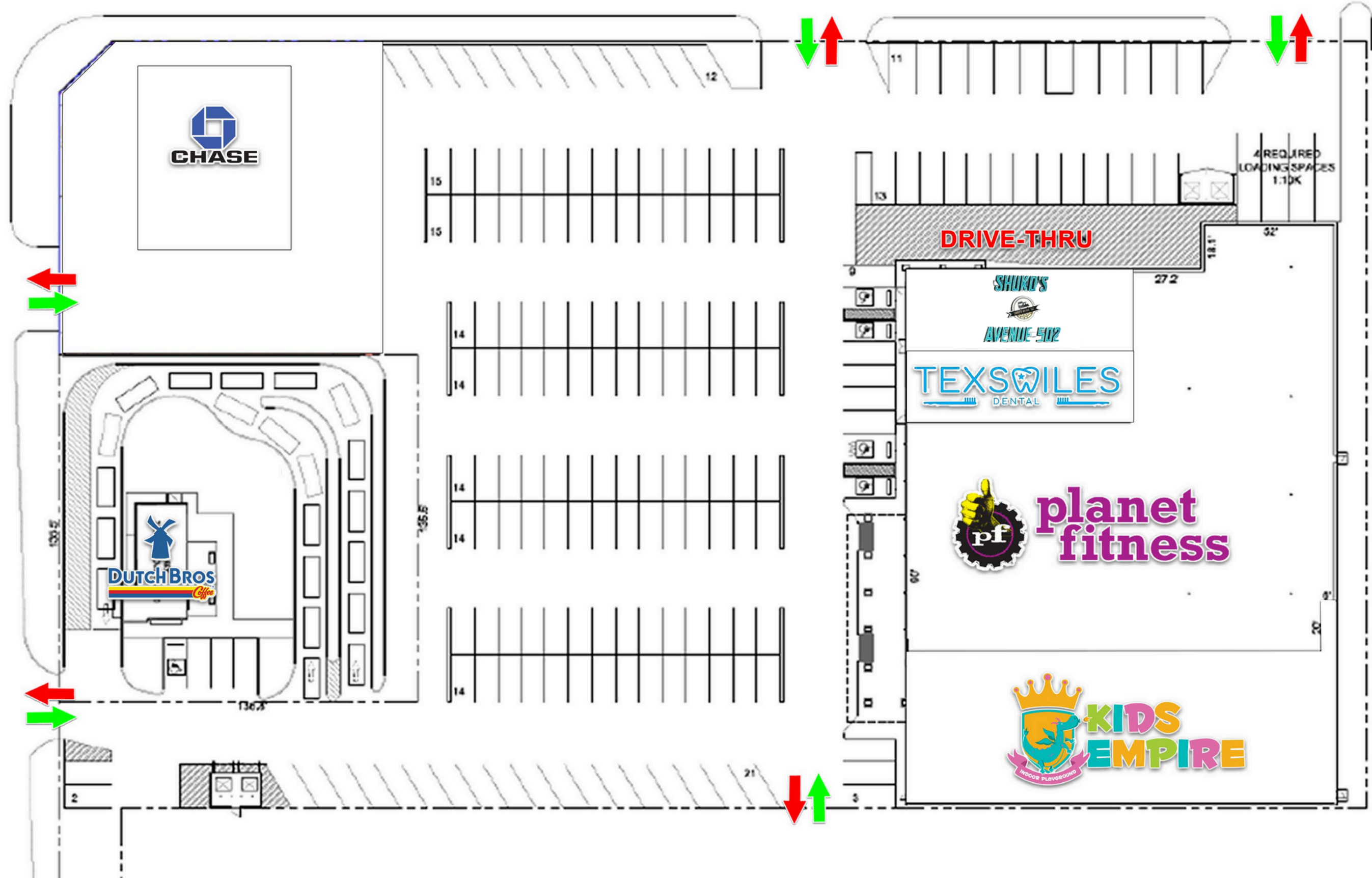
Area Retailers



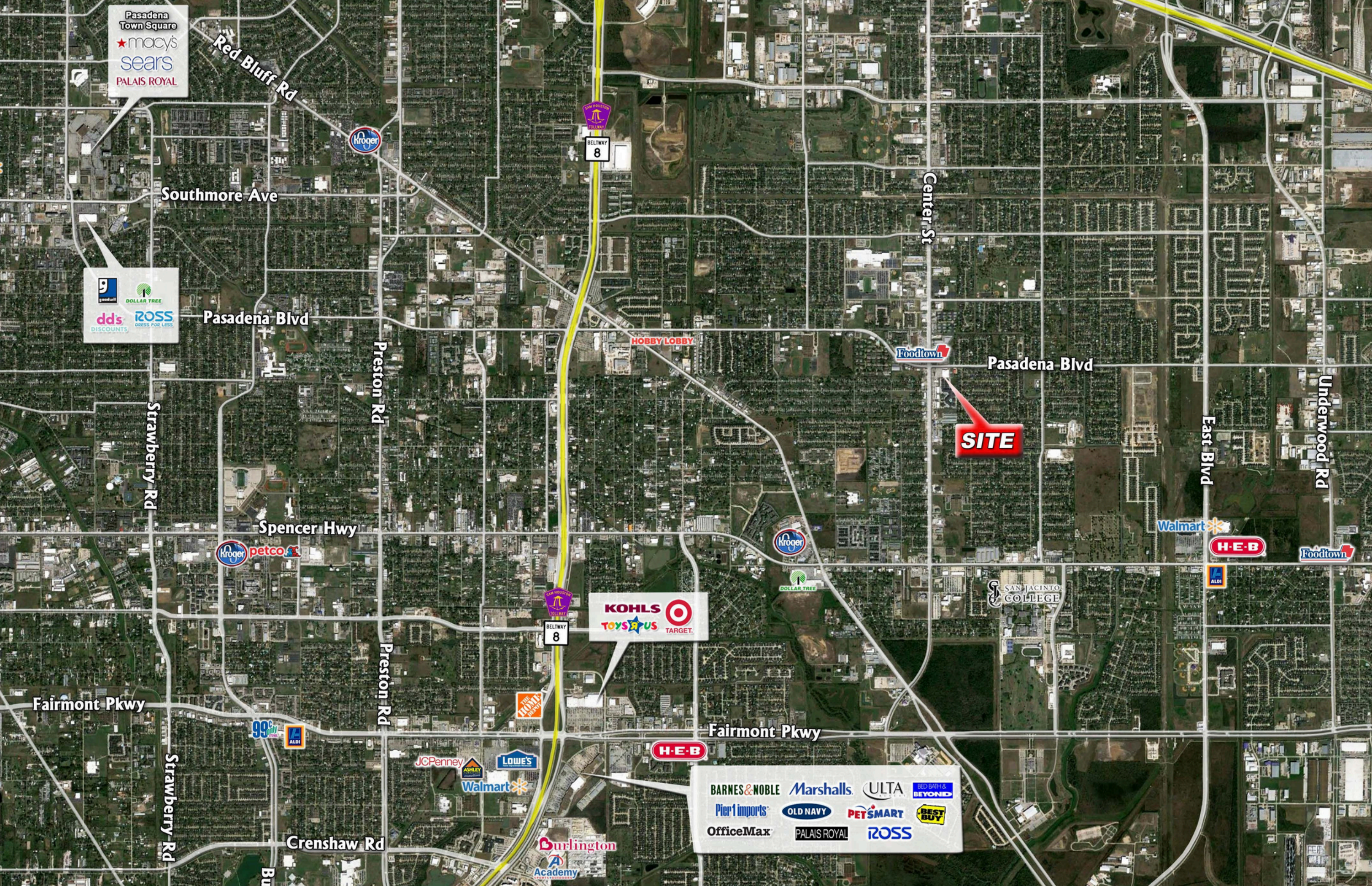


E PASADENA BLVD

CENTER ST



SITE PLAN



RETAIL AERIAL

DEER PARK MARKETPLACE
SEC Center St & Pasadena Blvd - Deer Park, Texas



Danny Kuperman
danny@arg-properties.com
p: 713-439-0101