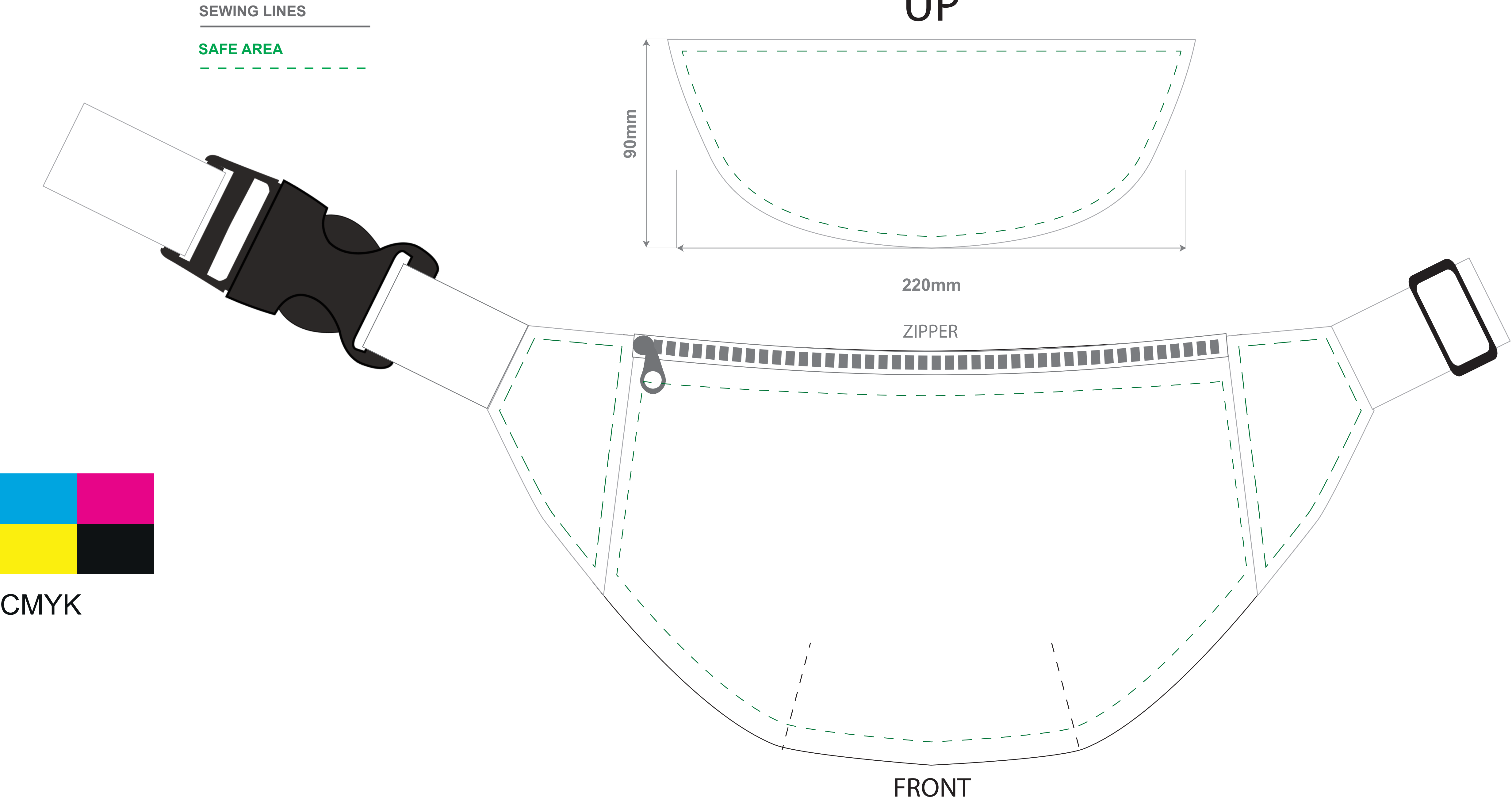


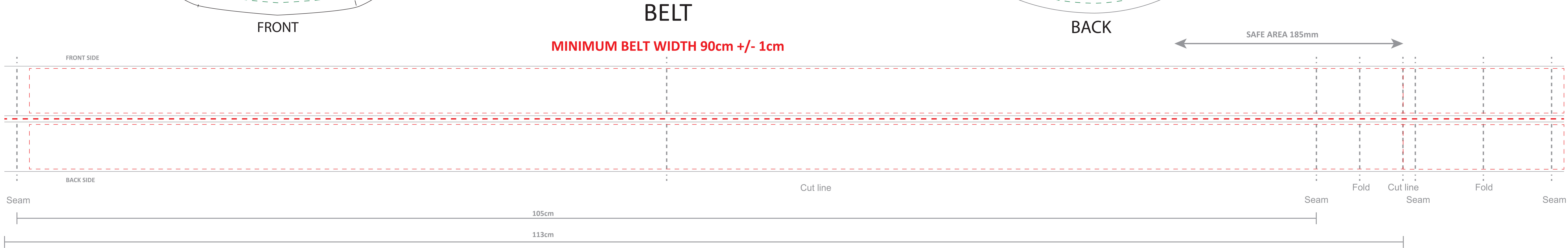
ORDER NAME:

# SUBLIMATION WAIST BAG

Standard size of large waist bag -  
**180mmx2 80mm (+/-5%)**



CMYK



**Possible imprint shift on the bag:**  **±10 mm**

To ensure the highest quality of service, please read carefully the following technical informations.

- 1) Tolerance of placing graphics on the bag material is +/- 10 mm, tape textile is + / - 2mm
- 2) Despite many efforts, colours on fabrics will be always only similar to the colour of CMYK patterns
- 3) If it's necessary to match any particular CMYK colour we advise to make a colour sample prior to the final approval of the order
- 4) Any complaint about the colours will be taken under consideration only if the colour sample was ordered
- 5) Minimum readable size of fonts is 6 pt. Arial
- 6) Minimum resolution is 300 dpi
- 7) Minimum line thickness is 0,2 mm
- 8) File format: pdf, eps, ai, cdr
- 9) Due to the sublimation process dimensions may change up to 5% compared to the standard size
- 10) All the graphics/logos outside the safe area may be cut or crossed by the stitching.

**PLACING THE ORDER OR ACCEPTING THIS PROJECT**  
**MEANS THAT YOU ARE FAMILIAR WITH PRESENTED**  
**TECHNICAL INFORMATION AND YOU AGREE WITH THEM**

**THE WHITE CAN BE BLURRED**  
**GRAPHICS WILL BE CUT**  
**GRAPHICS CAN BE PIERCED**  
**GRAPHICS IS NEAR SEWING**  
**DETAILS WILL BE INVISIBLE**  
**LINES ARE TOO THIN**  
**THE TEXT WILL BE UNREADABLE**  
**THE TEXT MAY BE BLURRED**